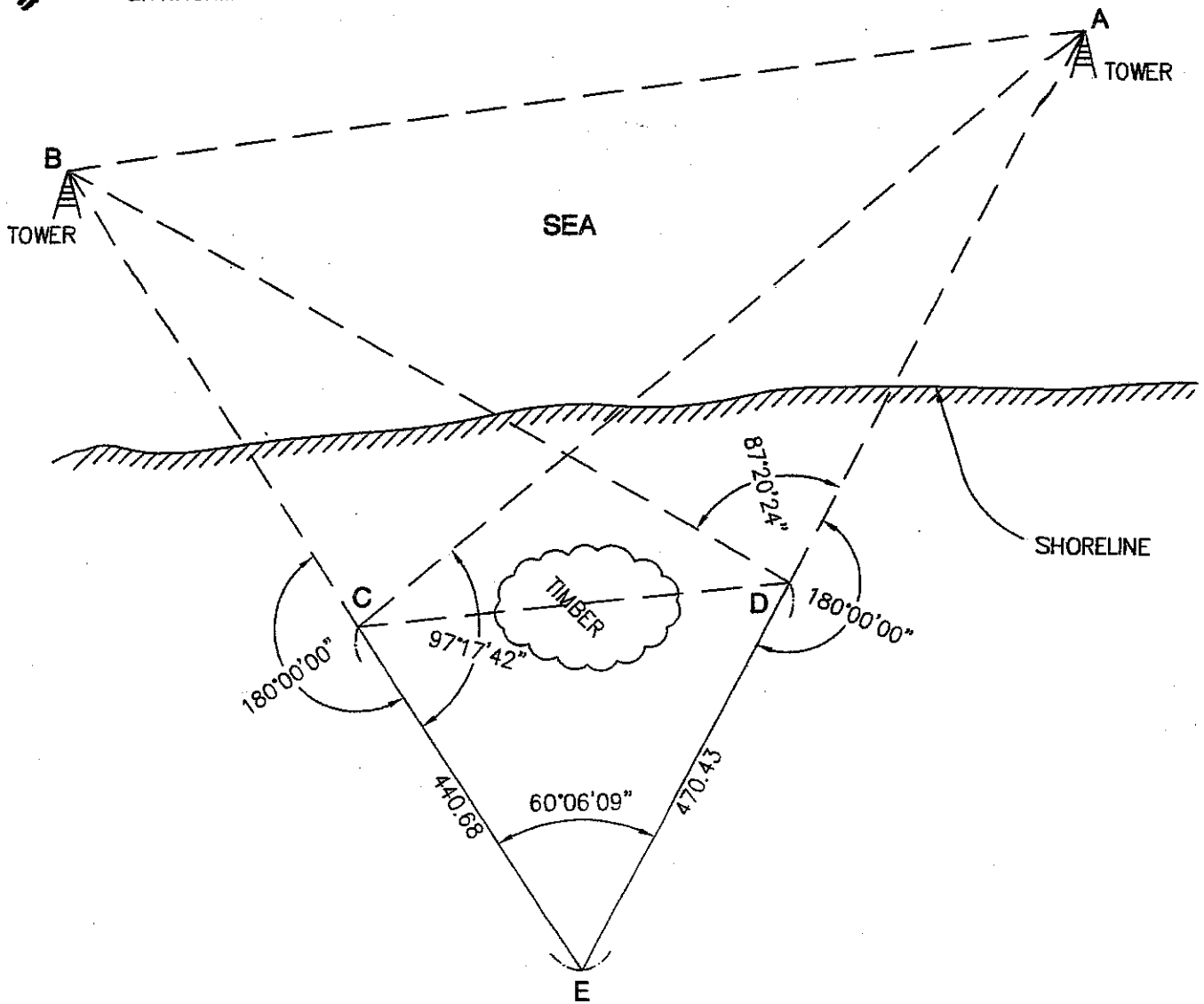


TRIG-STAR PROBLEM LOCAL CONTEST

TRIG STAR
#4

THE GOVERNMENT HAS CONSTRUCTED OFFSHORE COMMUNICATION TOWERS TO HELP MONITOR THE COASTAL WATERS. A FIBER OPTIC CABLE NEEDS TO BE CONNECTED FROM THE POINTS ON LAND TO THE TOWERS FOR INCREASED SECURITY. THIS CABLE WILL ENABLE THE TOWERS TO TRANSMIT MORE INFORMATION QUICKER, FOR SURVEILANCE AND ENVIRONMENTAL PURPOSES.



FIND:

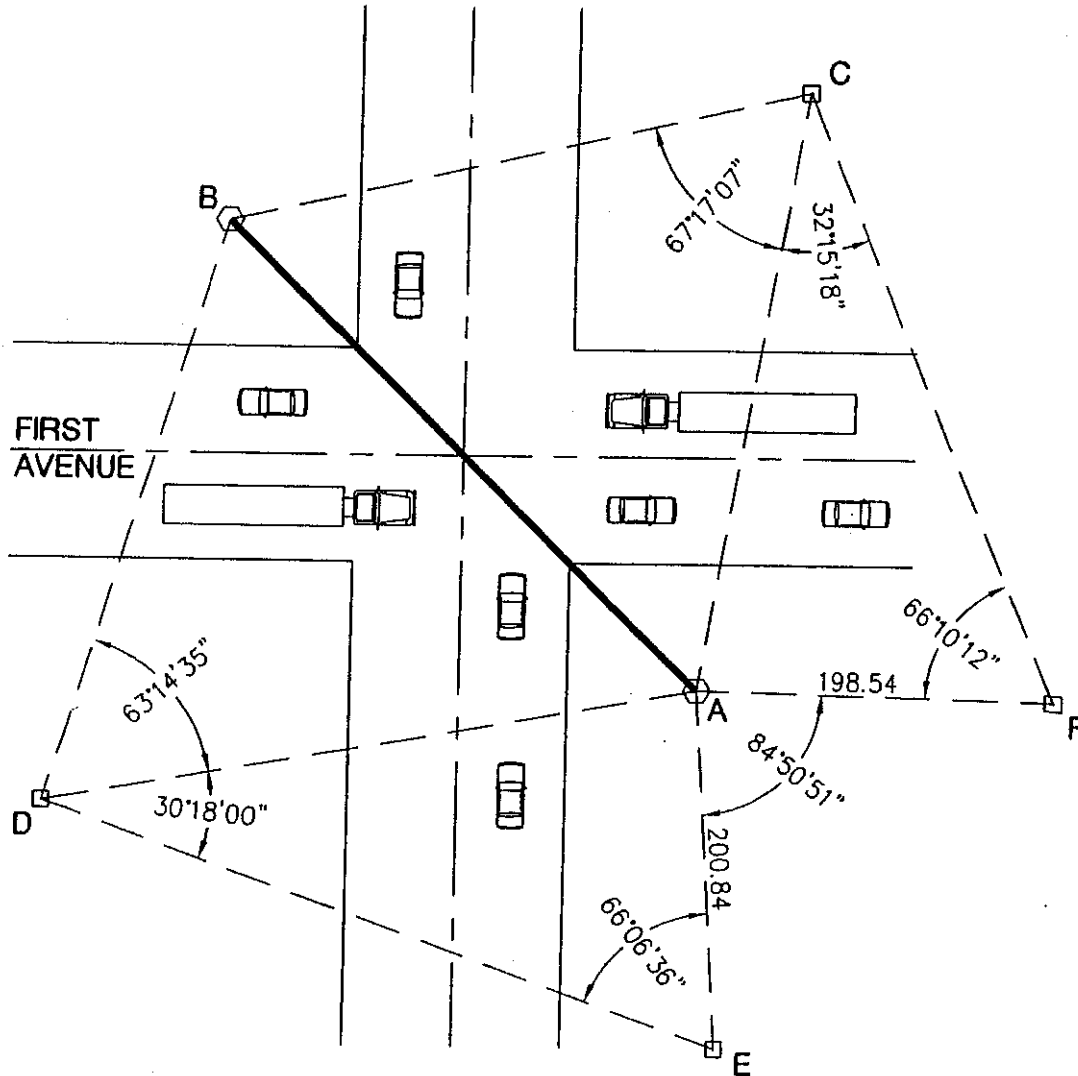
- * DISTANCE AC = _____ (4 POINTS)
- * DISTANCE AD = _____ (5 POINTS)
- DISTANCE BD = _____ (4 POINTS)
- DISTANCE BC = _____ (5 POINTS)
- * DISTANCE CD = _____ (5 POINTS)
- DISTANCE AB = _____ (7 POINTS)

REQUIRED ANSWER FORMAT
DISTANCES: NEAREST HUNDREDTH

PAGE TOTAL: _____ POINTS

TRIG-STAR PROBLEM LOCAL CONTEST

A LOCAL TRAFFIC ENGINEERING DEPARTMENT HAS DETERMINED THE NEED FOR AN OVERHEAD SIGNAL LIGHT SYSTEM AT A VERY BUSY INTERSECTION. THE SUPPORT POLES NEED TO BE PLACED AT POINTS A AND B. DUE TO HEAVY TRAFFIC VOLUME, THE FIELD MEASUREMENTS BY THE SURVEY CREW WERE LIMITED TO THE FOLLOWING SKETCH:



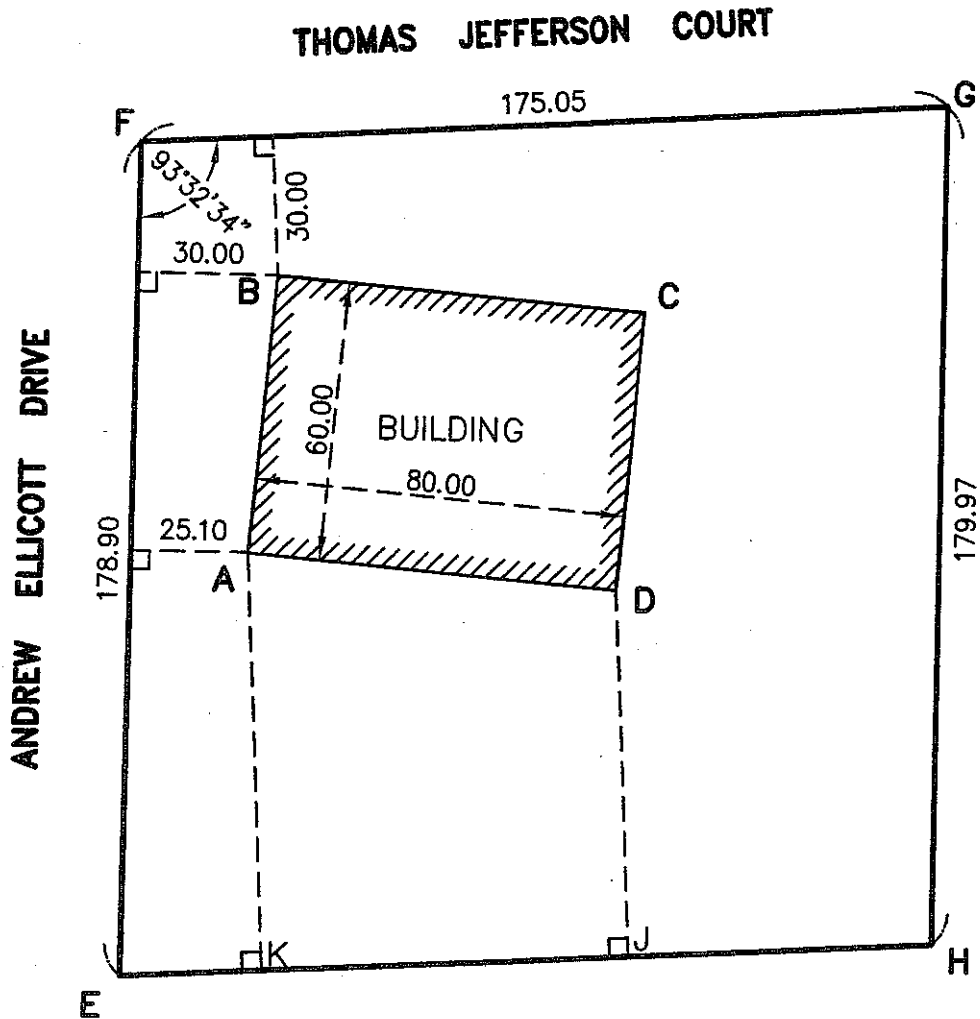
- FIND: * DISTANCE AC = _____ (6 POINTS)
 * DISTANCE AD = _____ (6 POINTS)
 DISTANCE DC = _____ (6 POINTS)
 DISTANCE BC = _____ (6 POINTS)
 DISTANCE AB = _____ (6 POINTS)

REQUIRED ANSWER FORMAT
 DISTANCES: NEAREST HUNDREDTH

PAGE TOTAL: _____ POINTS

TRIG-STAR PROBLEM LOCAL CONTEST

A SURVEYOR HAS BEEN ASKED TO STAKE OUT A NEW RECTANGULAR SHAPED BUILDING AS SHOWN IN THE DRAWING BELOW. POINTS A, B, C AND D REPRESENT THE BUILDING CORNERS AND POINTS E, F, G AND H ARE PROPERTY CORNERS. LINE EF IS PARALLEL WITH LINE HG.



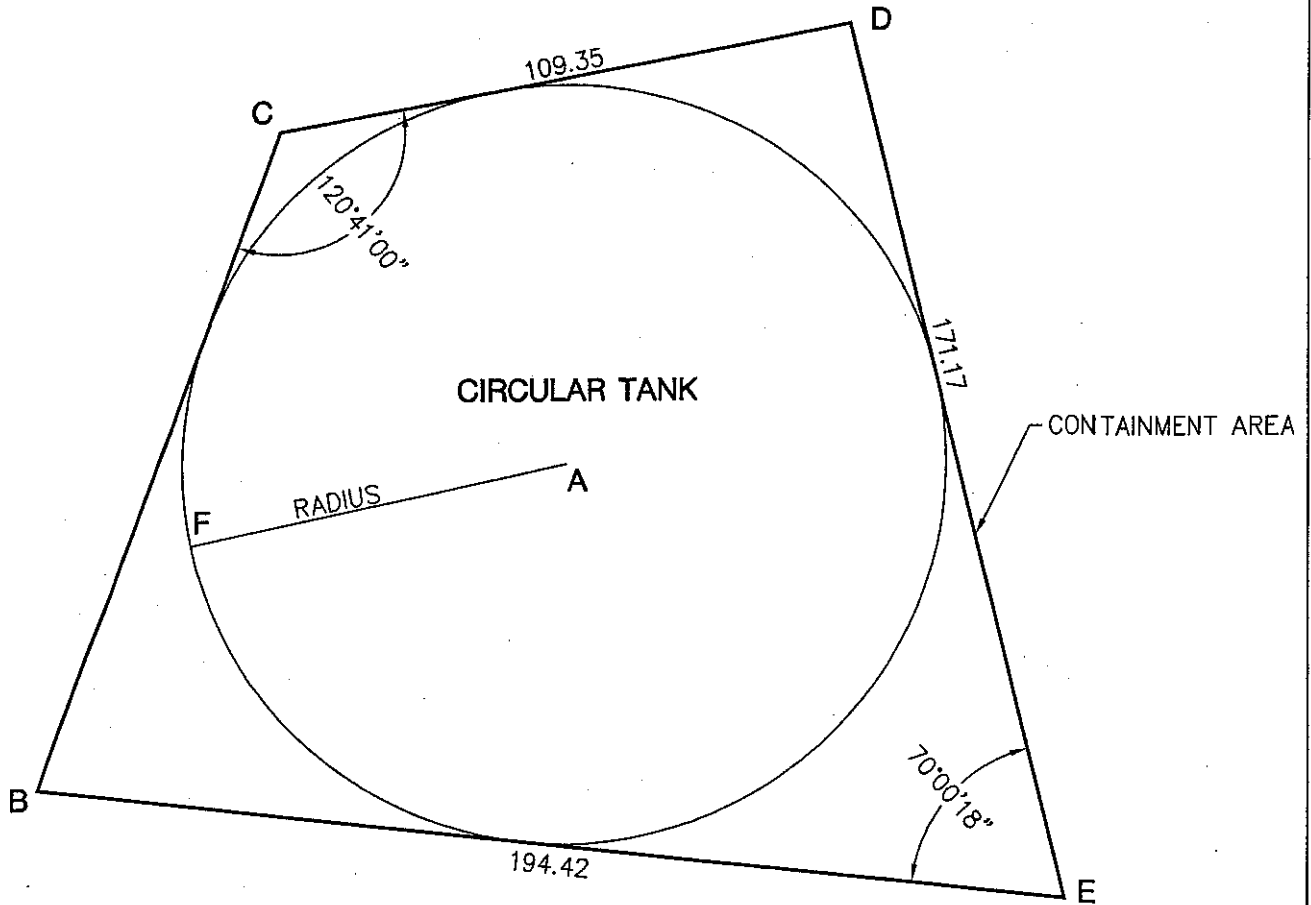
- FIND: ✕ DISTANCE AC = _____ (8 POINTS)
 DISTANCE AE = _____ (8 POINTS)
 DISTANCE EH = _____ (8 POINTS)
 DISTANCE AK = _____ (8 POINTS)
 DISTANCE DJ = _____ (8 POINTS)

REQUIRED ANSWER FORMAT
 DISTANCES: NEAREST HUNDREDTH

PAGE TOTAL: _____ POINTS

TRIG-STAR PROBLEM LOCAL CONTEST

A MOLASSES PLANT WANTS TO CONSTRUCT THE LARGEST CIRCULAR TANK POSSIBLE INSIDE AN OBLIQUE SHAPED CONTAINMENT AREA. THE CENTER OF THE CIRCULAR TANK IS INDICATED BY POINT "A" AND THE CORNERS OF THE CONTAINMENT AREA ARE LABELED "B", "C", "D" AND "E". A SURVEYOR HAS BEEN HIRED TO DETERMINE THE DIMENSIONS BELOW.



- FIND: DISTANCE AB = _____ (8 POINTS)
 DISTANCE AC = _____ (8 POINTS)
 DISTANCE AD = _____ (8 POINTS)
 DISTANCE AE = _____ (8 POINTS)
 RADIUS DISTANCE AF = _____ (8 POINTS)

REQUIRED ANSWER FORMAT
 DISTANCES: NEAREST HUNDREDTH

PAGE TOTAL: _____ POINTS

2005-2008

DISTANCE AB = 116.51
DISTANCE AC = 82.85
DISTANCE AD = 99.28
DISTANCE AE = 125.52
DISTANCE AF = 72.00

2007-2008

DISTANCE AC = 340.30
DISTANCE AD = 363.97
DISTANCE DC = 577.02
DISTANCE BC = 327.27
DISTANCE AB = 370.00

2010-2011

DISTANCE AC = 994.01
DISTANCE AD = 666.89
DISTANCE BD = 891.07
DISTANCE BC = 586.07
DISTANCE CD = 456.99
DISTANCE AB = 1087.93

2015-2016

DISTANCE AC = 100.00
DISTANCE AE = 94.30
DISTANCE EH = 174.99
DISTANCE AK = 89.36
DISTANCE DJ = 78.40